



**SOUTH LAREDO LIFT STATION**  
**Solicitation Number: CO-00561**  
**Job No.: 22-2503**

**ADDENDUM 2**  
**June 27, 2022**

To Bidder of Record:

This addendum, applicable to work referenced above, is an amendment to the bid proposal, plans and specifications, and as such will be a part of and included in the Contract Documents. Acknowledge receipt of this addendum by entering the Addendum number and issue date on the space provided in submitted copies of the bid proposal.

**CHANGES TO THE PLANS**

1. Sheet C-2 (4 of 51) REMOVE and REPLACE in its entirety.
2. Sheet C-3 (5 of 51) REMOVE and REPLACE in its entirety.
3. Sheet C-4 (6 of 51) REMOVE and REPLACE in its entirety.

**CHANGES TO SPECIFICATIONS**

1. **INVITATION TO BIDDERS.** The dates/times in the paragraphs are hereby modified as follows:

**“Due to the COVID-19 emergency and to protect the health of the public, SAWS is implementing new procedures for the submission of bids. Bids will be received either Electronically or through Sealed bids, until 1:00 PM (CDT), July 1, 2022. Electronic bids will be received via the secure SAWS FTP site. Sealed bids will be received by Contract Administration, 2800 U.S. Hwy 281 North, Tower II, Customer Center Building, via a drop box located on the left wall when walking through the first set of double glass doors of the main Tower II entry on the north side of the building, San Antonio, Texas 78212. See the Electronic Bid Opening Instructions attachment for additional information regarding an electronic bid submittal. Electronic bids shall be accompanied by a bid bond in an amount not less than five percent of the total bid price. (Or, if providing SAWS with a cashier's check or certified check in an amount not less than five percent of the total bid price, SAWS will request this within 24 hours from the apparent low bidder. Sealed bids must be accompanied by a cashier's check, certified check, or bid bond in an amount not less than five percent of the total bid price. Bids will then be publicly opened and read aloud by Contract Administration via WebEx.**

If Bidders intend to submit bids electronically, Bidders will need to submit a request by **June 30, 2022 by 1:00 PM (CDT)** to receive access to the File Transfer Protocol (FTP) site via email to [Lindsay.Esquivel@saws.org](mailto:Lindsay.Esquivel@saws.org). Bidder's email requesting access to the FTP site shall provide the legal name of Bidder's company and the intended recipient's email address and phone number. No requests for FTP site access will be accepted after **June 30, 2022 by 1:00 PM (CDT)**.

**Bid opening WebEx meeting will be held at 1:00 PM (CDT) on July 1, 2022.”**

**CLARIFICATIONS**


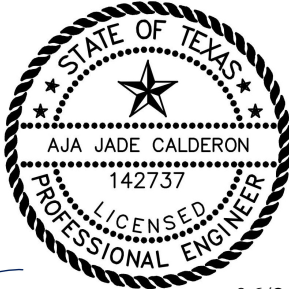
1. Contractor is to coordinate with Wet Well Wizard manufacturer for the location of the Wet Well Wizard inside the wet well. All accessories associated with the Wet Well Wizard, motor, hose, etc. shall be inclusive of Item No. 1 Lift Station lump sum.

**END OF ADDENDUM**

This Addendum, including these two (2) pages, is five (5) pages with attachments in its entirety.

Attachments:

- Sheet C-2 (4 of 51) Proposed Lift Station Plan and Section View
- Sheet C-3 (5 of 51) Proposed Force Main Layout
- Sheet C-4 (6 of 51) Proposed Gravity Main Sta 1+00 to Sta 4+00

  06/24/2022

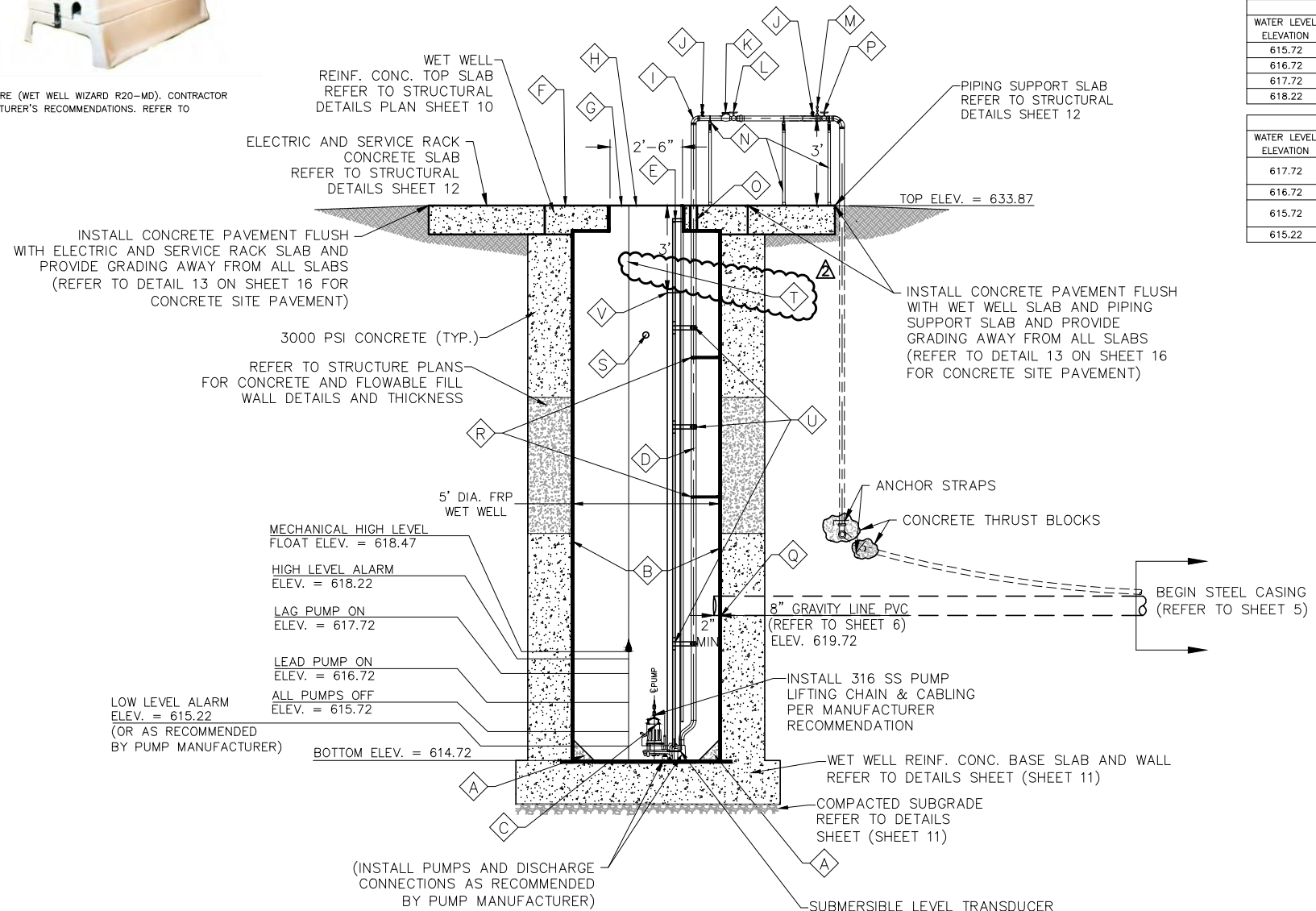
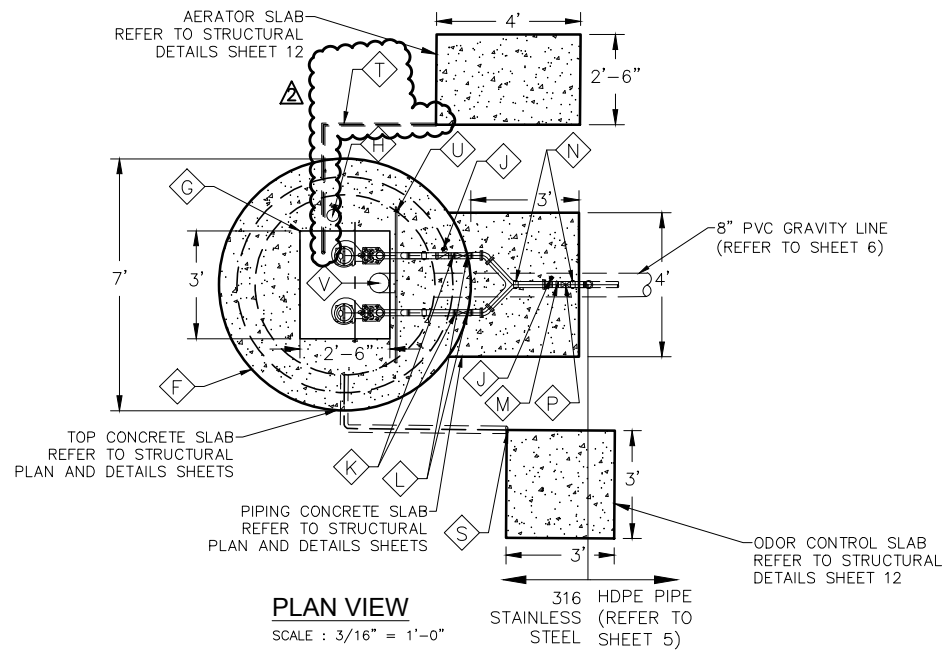
Aja Jade Calderon, P.E.  
BGE, Inc.  
TBPE Registration No. F-1046



FIG. 1 ACTIVATED CARBON ODOR CONTROL SYSTEM (CARBTROL GC2-1B90 SYSTEM). CONTRACTOR SHALL COORDINATE AND INSTALL THE UNIT PER MANUFACTURER'S RECOMMENDATIONS. REFER TO KEYED NOTE ⑤.



FIG. 2 AERATOR UNIT WITH LOCKING WEATHER BLOWER ENCLOSURE (WET WELL WIZARD R20-MD). CONTRACTOR SHALL COORDINATE AND INSTALL THE UNIT PER MANUFACTURER'S RECOMMENDATIONS. REFER TO KEYED NOTE ④.



**NOTES**

- INSTALL ODOR REDUCTION GASKET AND WATERTIGHT ACCESS HATCH WITH CLEAR OPENING PROVIDED WITH A SAFETY GRATE MADE OF ALUMINUM FOR FALL PROTECTION.
- PIPE, VALVES, AND FITTINGS (EXCEPT 316 STAINLESS STEEL AND PVC) INSIDE AND OUTSIDE THE WET WELL SHALL RECEIVE AFTER INSTALLATION A 100% SOLIDS EPOXY COATING SYSTEM WITH A TOP COAT SYSTEM OF URETHANE. COLOR SHALL BE GREY PANTONE #431U. APPROVED MANUFACTURERS INCLUDE TMECC, SHERWIN-WILLIAMS, PPG, AND M.A.B. PAINTS.
- PIPES, VALVES, AND FITTINGS INSIDE AND OUTSIDE WET WELL SHALL HAVE 316 STAINLESS STEEL BOLTS AND NUTS.
- CONTRACTOR SHALL CONFIRM SIZE AND LOCATION OF THE WET WELL ACCESS HATCH WITH SAFETY GRATE PER SELECTED ACCESS HATCH AND PUMPS MANUFACTURER'S RECOMMENDATIONS AND REQUIREMENTS.
- CONTRACTOR SHALL BE RESPONSIBLE FOR ALL REQUIRED FITTINGS TO CONNECT PROPOSED PIPES AND VALVES INSIDE AND OUTSIDE WET WELL.
- CONTRACTOR SHALL COORDINATE WITH FIBERGLASS WET WELL MANUFACTURER FOR PIPE SUPPORT INSTALLATION.
- ALL PIPES, VALVES AND FITTINGS INSIDE AND OUTSIDE WET WELL SHALL BE MADE OF 316 STAINLESS STEEL MATERIAL.

**KEYED NOTES--PROPOSED**

- ④ CONTRACTOR SHALL ADJUST AND CONSTRUCT BOTTOM OF WET WELL SLAB AS REQUIRED TO INSTALL PROPOSED DISCHARGE CONNECTION AND ANCHORS AND GROUT WET WELL FLOOR A MIN. OF 10% TO PUMP. COORDINATE DIMENSIONS WITH PUMPS MANUFACTURER.
- ⑤ INSTALL NEW FRP WET WELL COMPLETE WITH TOP AND BOTTOM CONCRETE SLABS AS SHOWN ON THIS SHEET. WET WELL SHALL HAVE A CLOSED BOTTOM.
- ⑥ INSTALL 2 NEW SUBMERSIBLE GRINDER PUMPS. REFER TO PROPOSED PUMP DATA TABLE.
- ⑦ INSTALL 2" 316 STAINLESS STEEL DISCHARGE PIPING.
- ⑧ INSTALL 316 STAINLESS STEEL UPPER AND INTERMEDIATE GUIDE BAR BRACKETS, GUIDE RAIL SUPPORT BARS, AND CABLE HOLDERS AS PER PUMP MANUFACTURER'S RECOMMENDATIONS. REFER TO DETAIL 3 AND 4 ON SHEET 13.
- ⑨ INSTALL NEW CONCRETE TOP SLAB AND PIPING SUPPORT SLAB. REFER TO STRUCTURAL PLAN AND DETAILS SHEETS.
- ⑩ INSTALL PUMP ODOR REDUCTION GASKET AND WATERTIGHT ACCESS HATCH WITH SAFETY GRATE. SAFETY GRATE SHALL OPEN TOWARDS THE DISCHARGE PIPING. REFER TO DETAIL 1 ON SHEET 13.
- ⑪ INSTALL ODOR REDUCTION GASKET AND WATERTIGHT 4" DIA. 316 STAINLESS STEEL PLATE FLUSH WITH CONCRETE TOP SLAB.
- ⑫ INSTALL 2-2" 90° BENDS 316 STAINLESS STEEL.
- ⑬ INSTALL PRESSURE GAUGE WITH ISOLATION BALL VALVE, MIN. 2.5" DIAL, 5% ACCURACY, LIQUID FILLED. REFER TO DETAIL 5 ON SHEET 13.
- ⑭ INSTALL 2-2" SWING TYPE CHECK VALVES 316 STAINLESS STEEL.
- ⑮ INSTALL 2-2" NRS GATE VALVES 316 STAINLESS STEEL.
- ⑯ INSTALL PRESSURE TRANSMITTER WITH ISOLATION BALL VALVE 316 STAINLESS STEEL. REFER TO DETAIL 6 ON SHEET 13.
- ⑰ INSTALL 316 STAINLESS STEEL PIPE SUPPORTS. REFER TO DETAIL 5 ON SHEET 14.
- ⑱ PROVIDE SEAL ON SLEEVED OR CORED DISCHARGE PIPE OPENINGS (LINK SEAL OR APPROVED EQUAL). REFER TO DETAIL 9 ON SHEET 13.
- ⑲ INSTALL 2" GATE VALVE 316 STAINLESS STEEL ON FORCE MAIN.
- ⑳ CONTRACTOR SHALL CONNECT 8" GRAVITY MAIN TO PROPOSED FRP WET WELL.
- ㉑ INSTALL PIPE SUPPORT 316 STAINLESS STEEL. REFER TO DETAIL 7 ON SHEET 13.
- ㉒ INSTALL ACTIVATED CARBON ODOR CONTROL SYSTEM COMPLETE WITH WEATHER SHROUD/SOUND ATTENUATION AND CONCRETE SLAB PER MANUFACTURER RECOMMENDATIONS (REFER TO SLAB DETAILS ON SHEET 12). INSTALL SUCTION HOSE WITH CARBTROL GC2-1B90 SYSTEM (REFER TO CARBON CANISTER DETAILS ON SHEET 15). REFER TO ELECTRICAL SHEETS FOR POWER SUPPLY AND CONNECTIONS. REFER TO FIGURE 1 THIS SHEET.
- ㉓ INSTALL WET WELL AERATOR COMPLETE WITH LOCKING WEATHER BLOWER ENCLOSURE AND CONCRETE SLAB PER MANUFACTURER RECOMMENDATIONS (REFER TO SLAB DETAILS ON SHEET 12). INSTALL WET WELL WIZARD R20-MD SYSTEM COMPLETE WITH AIR FEED HOSE, CONNECTING STAINLESS STEEL HARDWARE AND EJECTOR (REFER TO AIR DIFFUSER DETAILS ON SHEET 15). REFER TO ELECTRICAL SHEETS FOR POWER SUPPLY AND CONNECTIONS. REFER TO FIGURE 2 THIS SHEET.
- ㉔ INSTALL 316 STAINLESS STEEL WET WELL PIPING SUPPORT BEAMS. REFER TO DETAIL 1 ON SHEET 14.
- ㉕ INSTALL 8" SDR 26 PVC STILLING WELL. REFER TO DETAIL 2 ON SHEET 14.

**STATION OPERATION TABLE**

RISING LEVEL CYCLE		
WATER LEVEL ELEVATION	ACTION	PUMP(S) IN OPERATION
615.72	PUMPS OFF LEVEL	ALL PUMPS ARE OFF
616.72	LEAD PUMP LEVEL	LEAD PUMP ON
617.72	LAG PUMP LEVEL	LEAD & LAG PUMPS ON
618.22	HIGH WATER ALARM LEVEL	HIGH WATER ALARM SOUND

FALLING LEVEL CYCLE		
WATER LEVEL ELEVATION	ACTION	PUMP(S) IN OPERATION
617.72	LAG PUMP LEVEL	LEAD & LAG PUMPS ON ALARM TURNS OFF
616.72	LEAD PUMP LEVEL	LEAD & LAG PUMPS ON
615.72	ALL PUMPS OFF LEVEL	ALL PUMPS STOPPED - LAG PUMP SWITCHES TO LEAD PUMP
615.22	LOW LEVEL ALARM	LOW LEVEL ALARM ACTIVATES

BGE, INC. PROJECT: SAWS(S)SAWS - S. Laredo Lift Station/03\_CADD/01\_Shaills PLAN.dwg Jun 24, 2022-3:07pm acalderon

**BGE** BGE, Inc.  
7330 San Pedro, Suite 202 San Antonio, Tx 78216  
Tel: 210-581-3600 • www.bgeinc.com  
TBPE Registration No. F-1046

ADDENDUM NO. 2	AJC	AH	06/24/2022
No.	Revision	Drawn	Approved

**REVISIONS**

**SOUTH LAREDO LIFT STATION**  
**PROPOSED LIFT STATION PLAN AND SECTION VIEW**

DEVELOPER: \_\_\_\_\_  
CONT. BUDGET PROJ.

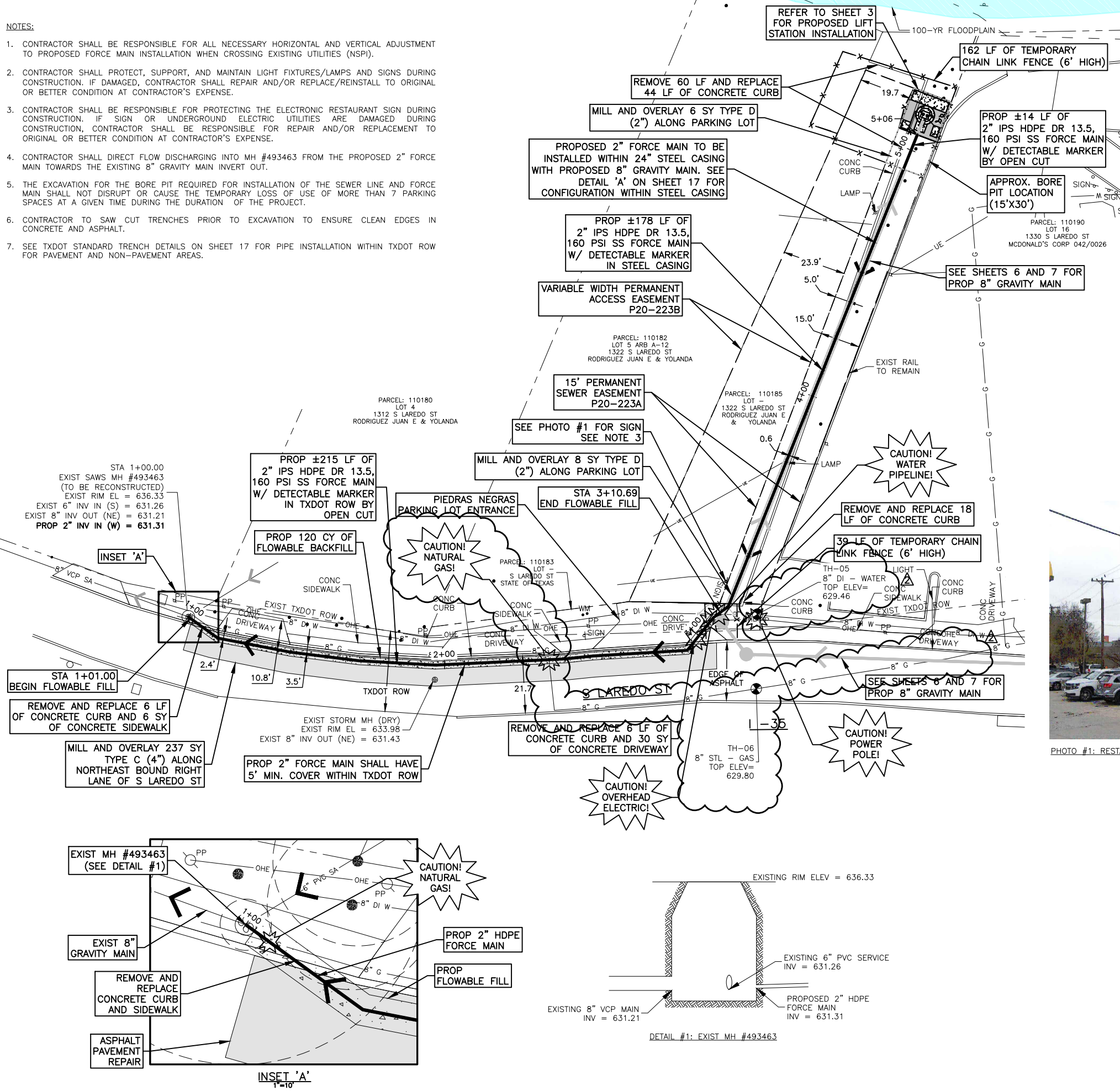
SUBMITTED \_\_\_\_\_  
APPROVED \_\_\_\_\_

MAP No. \_\_\_\_\_ SHEET C-2  
SECT. No. \_\_\_\_\_  
DR. EAB/CK. AH JOB No. 22-2503 4 OF 51

**STATE OF TEXAS**  
AJA JADE CALDERON  
142737  
LICENSED PROFESSIONAL ENGINEER  
06/24/2022  
*Aja Calderon*

**NOTES:**

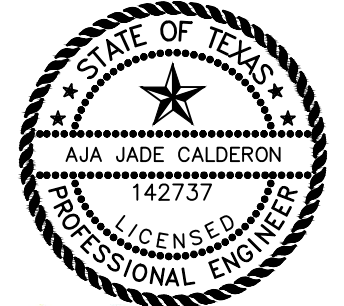
1. CONTRACTOR SHALL BE RESPONSIBLE FOR ALL NECESSARY HORIZONTAL AND VERTICAL ADJUSTMENT TO PROPOSED FORCE MAIN INSTALLATION WHEN CROSSING EXISTING UTILITIES (NSPI).
2. CONTRACTOR SHALL PROTECT, SUPPORT, AND MAINTAIN LIGHT FIXTURES/LAMPS AND SIGNS DURING CONSTRUCTION. IF DAMAGED, CONTRACTOR SHALL REPAIR AND/OR REPLACE/REINSTALL TO ORIGINAL OR BETTER CONDITION AT CONTRACTOR'S EXPENSE.
3. CONTRACTOR SHALL BE RESPONSIBLE FOR PROTECTING THE ELECTRONIC RESTAURANT SIGN DURING CONSTRUCTION. IF SIGN OR UNDERGROUND ELECTRIC UTILITIES ARE DAMAGED DURING CONSTRUCTION, CONTRACTOR SHALL BE RESPONSIBLE FOR REPAIR AND/OR REPLACEMENT TO ORIGINAL OR BETTER CONDITION AT CONTRACTOR'S EXPENSE.
4. CONTRACTOR SHALL DIRECT FLOW DISCHARGING INTO MH #493463 FROM THE PROPOSED 2" FORCE MAIN TOWARDS THE EXISTING 8" GRAVITY MAIN INVERT OUT.
5. THE EXCAVATION FOR THE BORE PIT REQUIRED FOR INSTALLATION OF THE SEWER LINE AND FORCE MAIN SHALL NOT DISRUPT OR CAUSE THE TEMPORARY LOSS OF USE OF MORE THAN 7 PARKING SPACES AT A GIVEN TIME DURING THE DURATION OF THE PROJECT.
6. CONTRACTOR TO SAW CUT TRENCHES PRIOR TO EXCAVATION TO ENSURE CLEAN EDGES IN CONCRETE AND ASPHALT.
7. SEE TXDOT STANDARD TRENCH DETAILS ON SHEET 17 FOR PIPE INSTALLATION WITHIN TXDOT ROW FOR PAVEMENT AND NON-PAVEMENT AREAS.



SPEC NO.	UNIT DESCRIPTION	UNIT	QUANTITY
103.1	Remove Concrete Curb (COSA Spec)	LF	66
104	Removing Concrete (Curb) (TxDOT Spec)	LF	18
104	Removing Concrete (Sidewalks) (TxDOT Spec)	SY	6
104	Removing Concrete (Driveways) (TxDOT Spec)	SY	30
192	Mulch (TxDOT Spec)	SY	30
203.1	Tack Coat (COSA Spec)	GAL	1
205.2	Hot Mix Asphaltic Pavement Type B (12" Compacted Depth) (COSA Spec)	SY	2
205.4	Hot Mix Asphaltic Pavement Type D (2" Compacted Depth) (COSA Spec)	SY	14
208.1	Salvaging Hauling & Stockpiling Reclaimable Asphaltic Pavement (2" Depth) (COSA Spec)	SY	14
300	One Course Surface Treatment (TxDOT Spec)	SY	237
305	Salvaging, Hauling, and Stockpiling Reclaimable Asphaltic Pavement (4") (TxDOT Spec)	SY	237
340	Hot Mix Asphaltic Pavement Type B (10" Compacted Depth) (TxDOT Spec)	SY	87
340	Hot Mix Asphaltic Pavement Type C (4" Compacted Depth) (TxDOT Spec)	SY	237
401	Flowable Fill (TxDOT)	CY	120
500.1	Concrete Curb (COSA Spec)	LF	50
502	Barricades, Signs, and Traffic Handling (TxDOT Spec) - S Laredo St	LS	1
502	Uniformed Officer (8 hours/day)	WK	5
507.3	Temporary Chain Link Fence (6' High)(COSA Spec)	LF	201
515.1	Topsoil (COSA Spec)	CY	2
516.1	Bermuda Sodding (COSA Spec)	SY	30
529	Concrete Curb (TxDOT Spec)	LF	24
530	Concrete Driveways (TxDOT Spec)	SY	30
531	Concrete Sidewalks (TxDOT Spec)	SY	6
540	Temporary Erosion, Sedimentation, and Water Pollution Prevention and Control (COSA Spec)	LS	1
550	Trench Excavation Safety Protection	LF	229
662	Hot Applied Thermoplastic Pavement Markings (4" Wide White Line)(TxDOT Spec)	LF	125
662	Hot Applied Thermoplastic Pavement Markings (Railroad Crossing)(TxDOT Spec)	EA	1
848	2" HDPE Force Main Sewer Pipe (ASTM F714, 160 psi) (All Depths) (Open Cut)	LF	229
855	Reconstruction of Existing Manhole	EA	1
856	2" HDPE Carrier Pipe	LF	178
6001	Portable Changeable Message Board	EA	2



PHOTO #1: RESTAURANT SIGN



Aja Calderon 06/24/2022

**LEGEND**

- EXIST. WATER MAIN - 6" PVC
- SANITARY SEWER - 6" CP SA
- GAS MAIN - C
- UTILITY POLE LINE - OHE
- OVERHEAD ELECTRIC - OHE
- UNDERGROUND ELECTRIC - UGE
- UNDERGROUND CABLE - UGC
- CONTOUR - 678
- CHAIN LINK FENCE - X
- STORM MAIN - 48" RCP STM
- UNDERGROUND TELE - UT
- SITE PAVEMENT - [Symbol]
- DEMO/REMOVE - [Symbol]
- FLOOD PLAIN - [Symbol]

**REVISIONS**

No.	Revision	Drawn	Approved	Date
ADDENDUM NO. 2		AJC	AH	06/24/2022

**DEVELOPER:** BGE, Inc. 7330 San Pedro, Suite 202 San Antonio, Tx 78216  
Tel: 210-581-3600 • www.bgeinc.com  
TBPE Registration No. F-1046

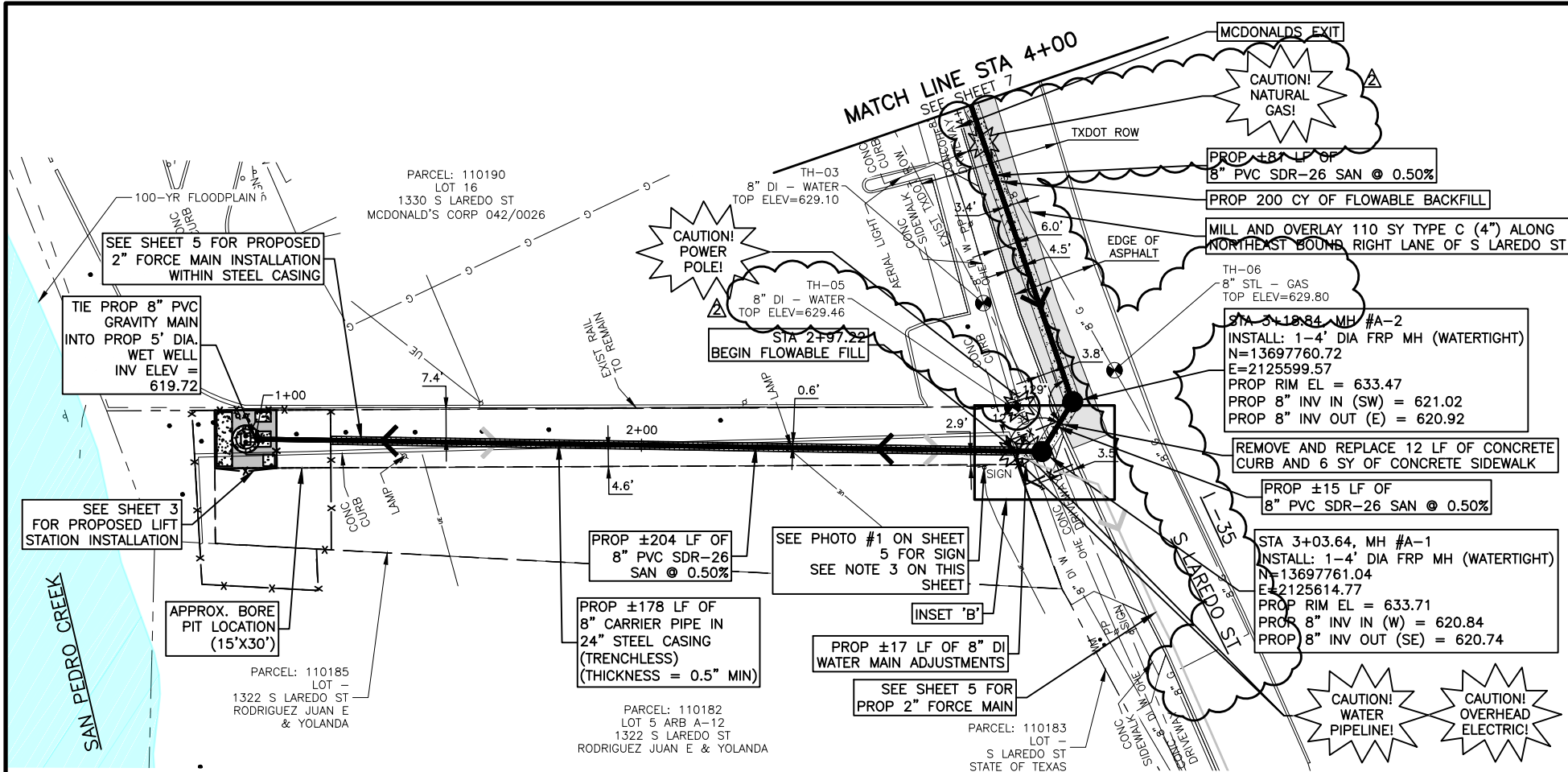
**CONT. BUDGET PROJ.**

**SUBMITTED**

**APPROVED**

MAP No. 156572, 156574 SHEET C-3  
SECT. No. DR. EAB/CK. AH JOB No. 22-2503 5 OF 51

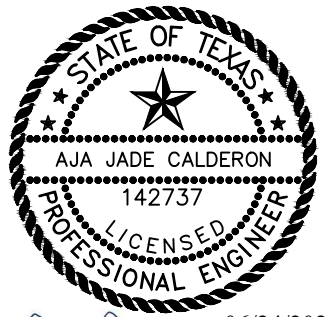
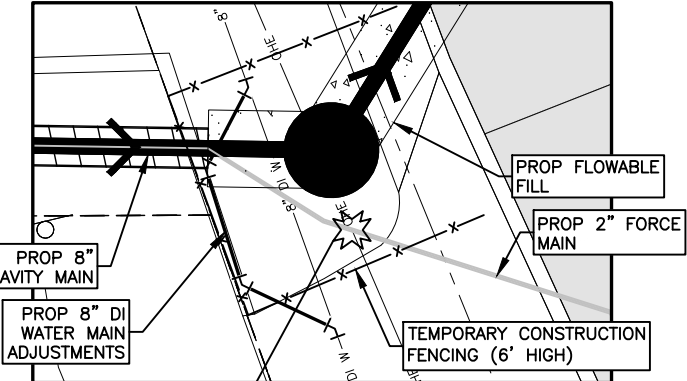
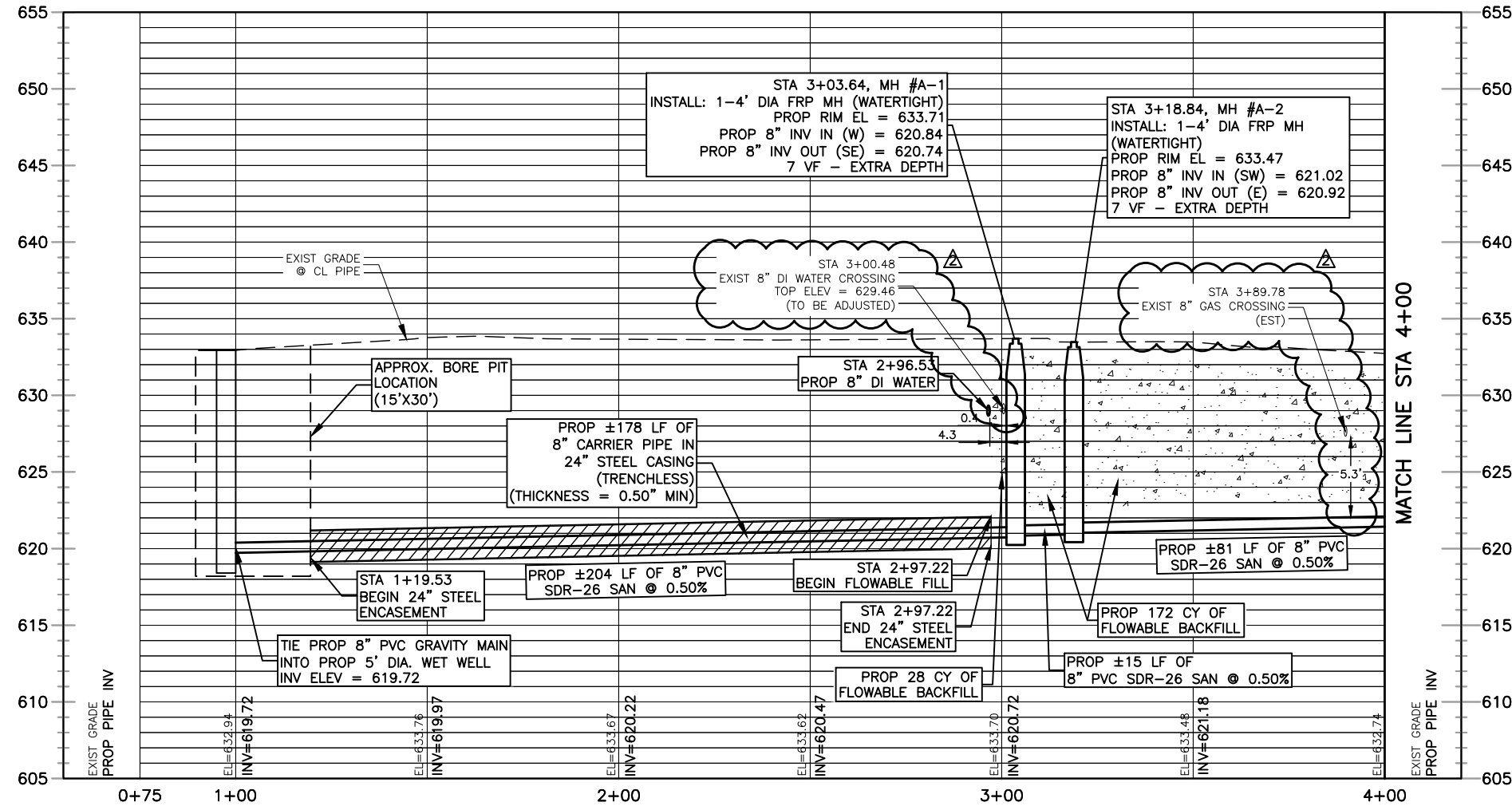
BGE, INC. 7330 San Pedro, Suite 202 San Antonio, TX 78216



SPEC NO.	UNIT DESCRIPTION	UNIT	QUANTITY
104	Removing Concrete (Curb) (TxDOT Spec)	LF	12
104	Removing Concrete (Sidewalks) (TxDOT Spec)	SY	6
300	One Course Surface Treatment (TxDOT Spec)	SY	110
305	Salvaging, Hauling, and Stockpiling Reclaimable Asphaltic Pavement (4") (TxDOT Spec)	SY	110
340	Hot Mix Asphaltic Pavement Type B (10" Compacted Depth) (TxDOT Spec)	SY	46
340	Hot Mix Asphaltic Pavement Type C (4" Compacted Depth) (TxDOT Spec)	SY	110
401	Flowable Fill (TxDOT)	CY	200
529	Concrete Curb (TxDOT Spec)	LF	12
531	Concrete Sidewalks (TxDOT Spec)	SY	6
550	Trench Excavation Safety Protection	LF	122
662	Hot Applied Thermoplastic Pavement Markings (4" Wide White Line)(TxDOT Spec)	LF	26
SP 814	Water Line Adjustments	LS	1
848	8" PVC Gravity Sanitary Sewer Pipe (SDR 26-2441, 160 psi) (All Depths) (Open Cut)	LF	122
853	Sanitary Sewer FRP Manhole (4' Dia.) (0'-6')	EA	2
853	Extra Depth FRP Manhole (Greater than 6')	VF	14
856	Jacking, Boring or Tunneling 24"	LF	178
856	8" PVC Carrier Pipe	LF	178
856	Steel Casing (24") (Thickness = 0.5" Min.)	LF	178
866	Post Sewer Main Television Inspection (8"-15")	LF	300

- NOTES:
- CONTRACTOR SHALL VERIFY EXACT DEPTH AND LOCATION OF EXIST 8" GAS MAIN IN ADVANCE AND PRIOR TO CONSTRUCTION (NSPI). CONTRACTOR SHALL PROTECT, SUPPORT, AND MAINTAIN EXIST 8" GAS CROSSING (NSPI). CONTRACTOR SHALL BACKFILL AROUND 8" GAS WITH ORANGE SAND AS APPROVED BY CPS ENERGY (NSPI).
  - CONTRACTOR SHALL PROTECT, SUPPORT, AND MAINTAIN LIGHT FIXTURES/LAMPS AND SIGNS DURING CONSTRUCTION. IF DAMAGED, CONTRACTOR SHALL REPAIR AND/OR REPLACE/REINSTALL TO ORIGINAL OR BETTER CONDITION AT CONTRACTOR'S EXPENSE.
  - CONTRACTOR SHALL BE RESPONSIBLE FOR PROTECTING THE ELECTRONIC RESTAURANT SIGN DURING CONSTRUCTION. IF SIGN OR UNDERGROUND ELECTRIC UTILITIES ARE DAMAGED DURING CONSTRUCTION, CONTRACTOR SHALL BE RESPONSIBLE FOR REPAIR AND/OR REPLACEMENT TO ORIGINAL OR BETTER CONDITION AT CONTRACTOR'S EXPENSE.
  - SITE RESTORATION BID ITEMS FOR PROPOSED 8-INCH GRAVITY MAIN WITHIN 15-FOOT PERMANENT SEWER EASEMENT HAVE BEEN INCLUDED ON SHEET 5 WITH PROPOSED 2-INCH FORCE MAIN.
  - REFER TO SAWS STANDARD DETAIL DD-852-12 FOR FLOWABLE FILL BACKFILL INSTALLATION FOR NEW FRP MANHOLES.
  - PROPOSED SP 814 WATER MAIN ADJUSTMENTS INCLUDE 8" DI WATER MAIN, TRENCH PROTECTION, FITTINGS, RESTRAINTS, TIE-INS, TEMPORARY BLOW-OFFS, EXCAVATION, TRENCHING, BACKFILL, TESTING, AND FLOWABLE FILL.
  - CONTRACTOR MUST MAINTAIN A MINIMUM OF 2-FOOT SEPARATION FROM ANY GAS LINES WITH PROPOSED EXCAVATIONS.
  - SEE TXDOT STANDARD TRENCH DETAILS ON SHEET 17 FOR PIPE INSTALLATION WITHIN TXDOT ROW FOR PAVEMENT AND NON-PAVEMENT AREAS.

### SOUTH LAREDO 8" GRAVITY LINE



*Aja Calderon* 06/24/2022

**LEGEND**

- EXIST. WATER MAIN - 8" PVC
- SANITARY SEWER - 6" CP SA
- GAS MAIN - C
- UTILITY POLE LINE - OHE
- OVERHEAD ELECTRIC - OHE
- UNDERGROUND ELECTRIC - UGE
- UNDERGROUND CABLE - UGC
- CONTOUR - 678
- CHAIN LINK FENCE - X
- STORM MAIN - 48" RCP STM
- UNDERGROUND TELE - UT
- SITE PAVEMENT - [Symbol]
- DEMO/REMOVE - [Symbol]
- FLOOD PLAIN - [Symbol]

**BGE, Inc.**  
7330 San Pedro, Suite 202 San Antonio, Tx 78216  
Tel: 210-581-3600 • www.bgeinc.com  
TBPE Registration No. F-1046

No.	Revision	Drawn	Approved	Date
ADDENDUM NO. 2	AJC	AH		06/23/2022

**SOUTH LAREDO LIFT STATION**  
PROPOSED GRAVITY MAIN  
STA 1+00 TO STA 4+00

DEVELOPER: [Blank]  
CONT. BUDGET PROJ.  
SUBMITTED [Blank]  
APPROVED [Blank]  
MAP No. 156572, 156574 SHEET C-4  
SECT. No. DR. EAB/CK. AH JOB No. 22-2503 6 OF 51

BGE, INC. CIVIL PROJECTS/SAWS/SAWS - S. Laredo Lift Station/03\_CADD/01\_Shaells MAINS\_BORE.dwg Jun 24, 2022 3:03pm scale:non